

MONTHLY MEMBERSHIP PROGRESS REPORT

District 404 A4

Results as of: 4/30/2025

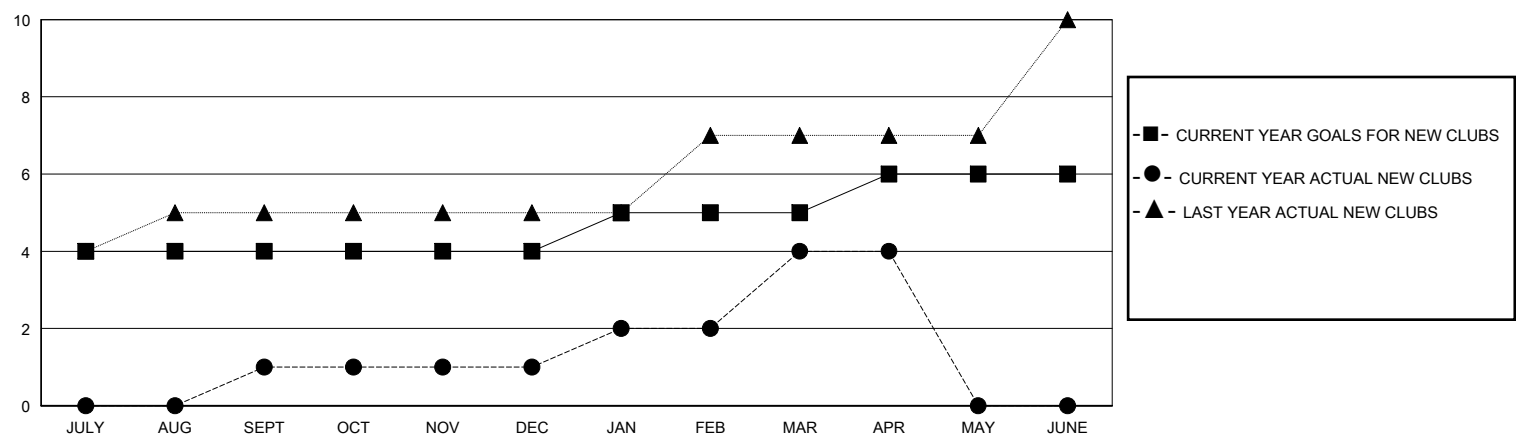
GMT:

LOCATION NIGERIA

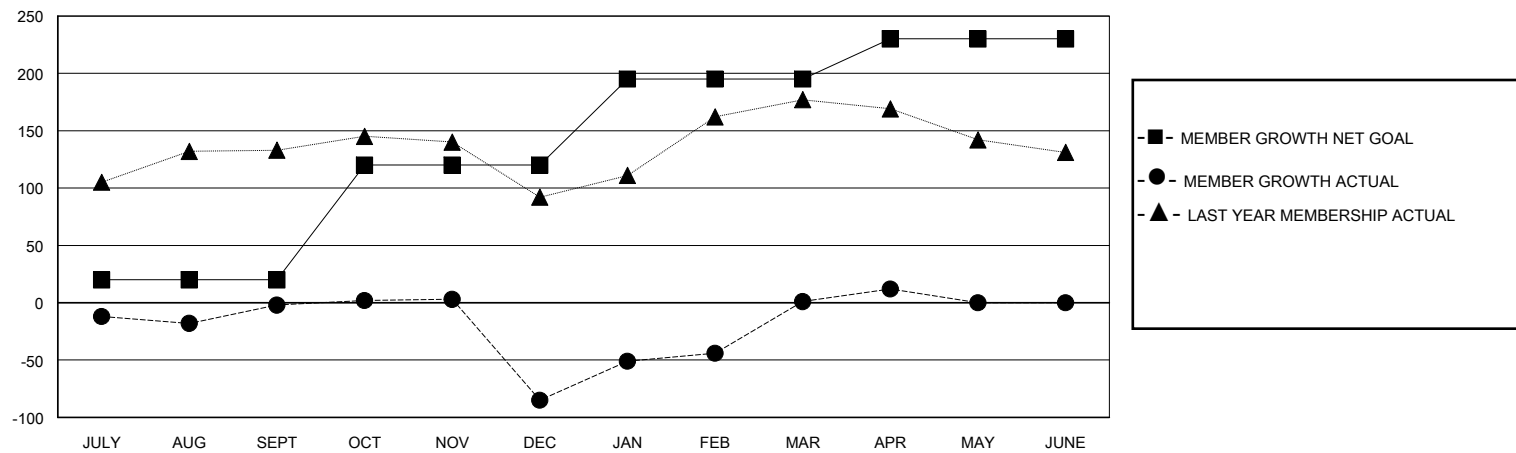
GMT CA

| Clubs | | | | Members | | | |
|-----------------------|---------------|-----------|---------------|-----------------------|------------------------|----------------------|--|
| RESULTS FOR 2024-2025 | | | | RESULTS FOR 2024-2025 | | | |
| QUARTER | NEW CLUB GOAL | NEW CLUBS | DROPPED CLUBS | QUARTER | MEMBER GROWTH NET GOAL | MEMBER GROWTH ACTUAL | DROPPED MEMBERS ACTUAL (including transfers) |
| JULY/AUG/SEPT | 4 | 1 | 0 | JULY/AUG/SEPT | 20 | 43 | 37 |
| OCT/NOV/DEC | 0 | 0 | 2 | OCT/NOV/DEC | 100 | 57 | 127 |
| JAN/FEB/MAR | 1 | 3 | 0 | JAN/FEB/MAR | 75 | 107 | 17 |
| APR/MAY/JUNE | 1 | 0 | 0 | APR/MAY/JUNE | 35 | 17 | 5 |

GOALS AND ACTUAL NEW CLUBS CUMULATIVE



GOALS AND ACTUAL MEMBERS CUMULATIVE



| | | | |
|------------------|---|---------------------------------|--------------|
| DROPPED CLUBS: 2 | 38 CLUBS OF 74 ADDED 1 OR MORE NEW MEMBERS | GENDER DISTRIBUTION | |
| | | MALE | 838 (57.67%) |
| | | FEMALE | 615 (42.33%) |
| DROPPED MEMBERS | CLICK HERE FOR CUMULATIVE MEMBERSHIP DATA | TOTAL FAMILY UNIT MEMBERS | |
| DECEASED | | 0 | |
| CLUB CANCELLED | | FAMILY MEMBERS PAYING HALF DUES | |
| OTHER | | 0 | |
| TOTAL | | | |
| | | | |